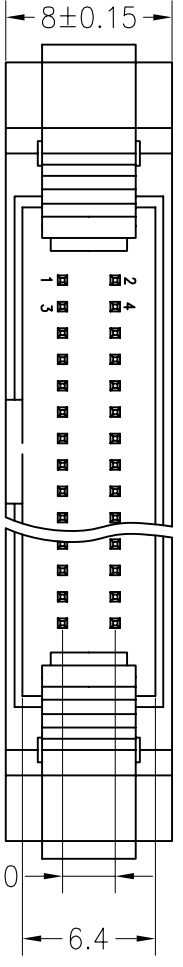


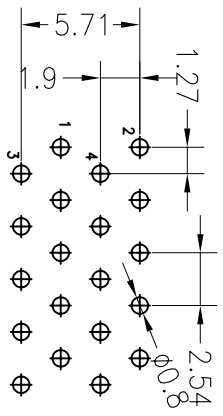
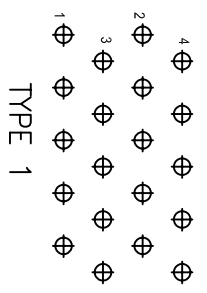
SPECIFICATIONS

Rated Current: 1.0AMP
 Contact Resistance: 20mΩ Max
 Withstand Voltage: 500V AC/DC
 Insulation Resistance: 1000MΩ Min
 Operation Temperature: -40°c to +105°c

Contact Material: Brass
 Contact Plating: Au or Sn Over Ni
 Insulator Material: Polyester (UL94V-0)
 Standard: PA6T
 Max. Processing Temp: 230°C for 30-60 seconds
 (260°C for 10 seconds)



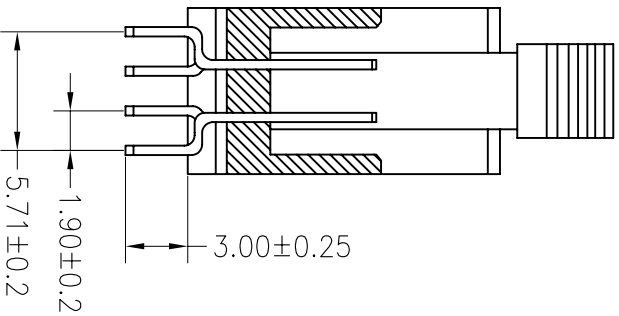
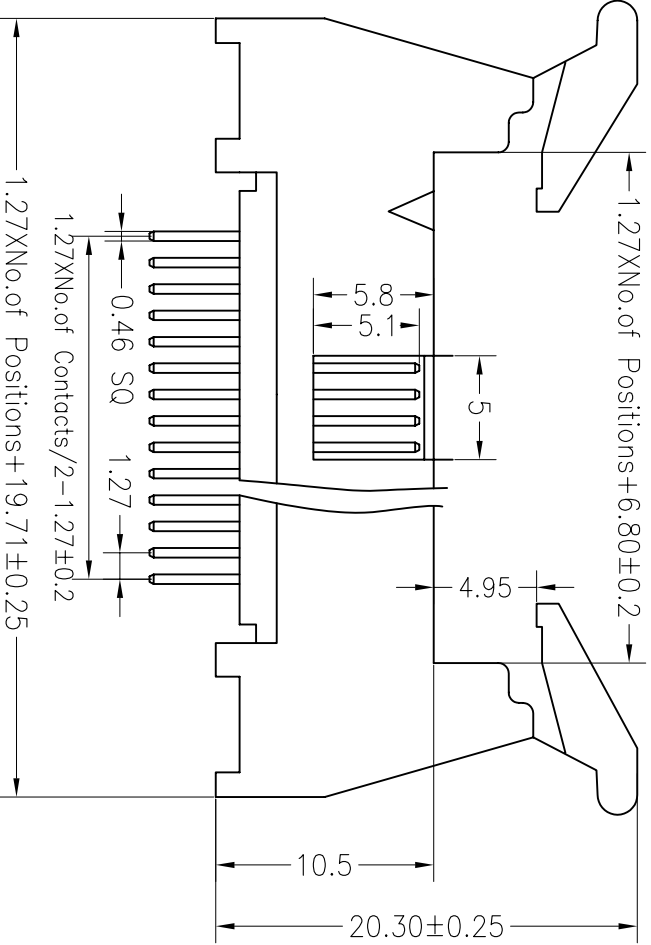
Recommended P.C.B Layout (Top Side)
 (PCB BOARD TOLERANCE ±0.05)



Ordering Information

3341 XX S XX X B L X 01(2)

No. of Pins 10-100
 Contact Plating G2:5U" Gold
 G2:5U" Gold
 G3:10U" Gold
 G4:15U" Gold
 G5:30U" Gold
 Sn:1Tin
 Insulator Material A=BK-EP1
 B=BK-PA66
 C=BK-PA6T
 D=BK-PA46
 E=BK-PA9T
 F=BK-LCP
 Color Type B=Black
 G=Grey
 Plating Texture A=100
 P=100+0.2



OPERATION		DRAW		YTYuSheng		SCALE		FIT		PART NO.	
X.X	±0.30	X.X	±0.30			UNIT	mm	A4	1/1	3341XXXXXXLX01(2)	
X.XX	±0.20	CHECK		12.10.05		SIZE	A4	SHEET		SHENZHEN JINLING ELECTRONIC CO.,LTD	
X.XXX	±0.10	APPROVE				PROJ.	1/1	TITLE:		深圳市锦凌电子有限公司	
REV	DATE	MODIFICATION DESCRIPTION		CHANGE		DIM		TOL		1.27*2.54mm ejector header Npin	
1	2012.10.05	NEW DRAWING		4		±3°		A		180° Four Row Foot	

JIN 深圳市锦凌电子有限公司
 SHENZHEN JINLING ELECTRONIC CO.,LTD
 Tel: 86-755-2997-5806/5802 Fax: 86-755-2997-5992